

# Events of the future



EUREF



## FROM BERLIN

---

5.5 h urban district

7,000 employees on campus from 2024

150 companies and institutions



## TO DÜSSELDORF

---

3.5 h urban district

4,000 employees on campus from 2024

Prospective space for 100 companies  
and institutions



# OUR MISSION

We show that the mobility and energy transition is feasible and affordable.

Both EUREF-campus meet the German government's climate targets for 2045



Sustainable Events



Strong Community



Feel good atmosphere



Innovation Spirit

**SUSTAINABLE  
MEETINGS  
BERLIN**

High  
Performer  


# OUR DNA



# The perfect match of place & purpose





**KfW-55**  
building

**CO<sub>2</sub>**  
neutral events

**4.000 m<sup>2</sup>**  
of multifunctional  
event space



**Mobility hub  
of the future**

research campus for  
intelligent mobility concepts

**Smart  
energy system**

with lake water  
utilisation

**Perfectly  
located**

in the heart of the  
Rhine-Ruhr metropolitan  
region



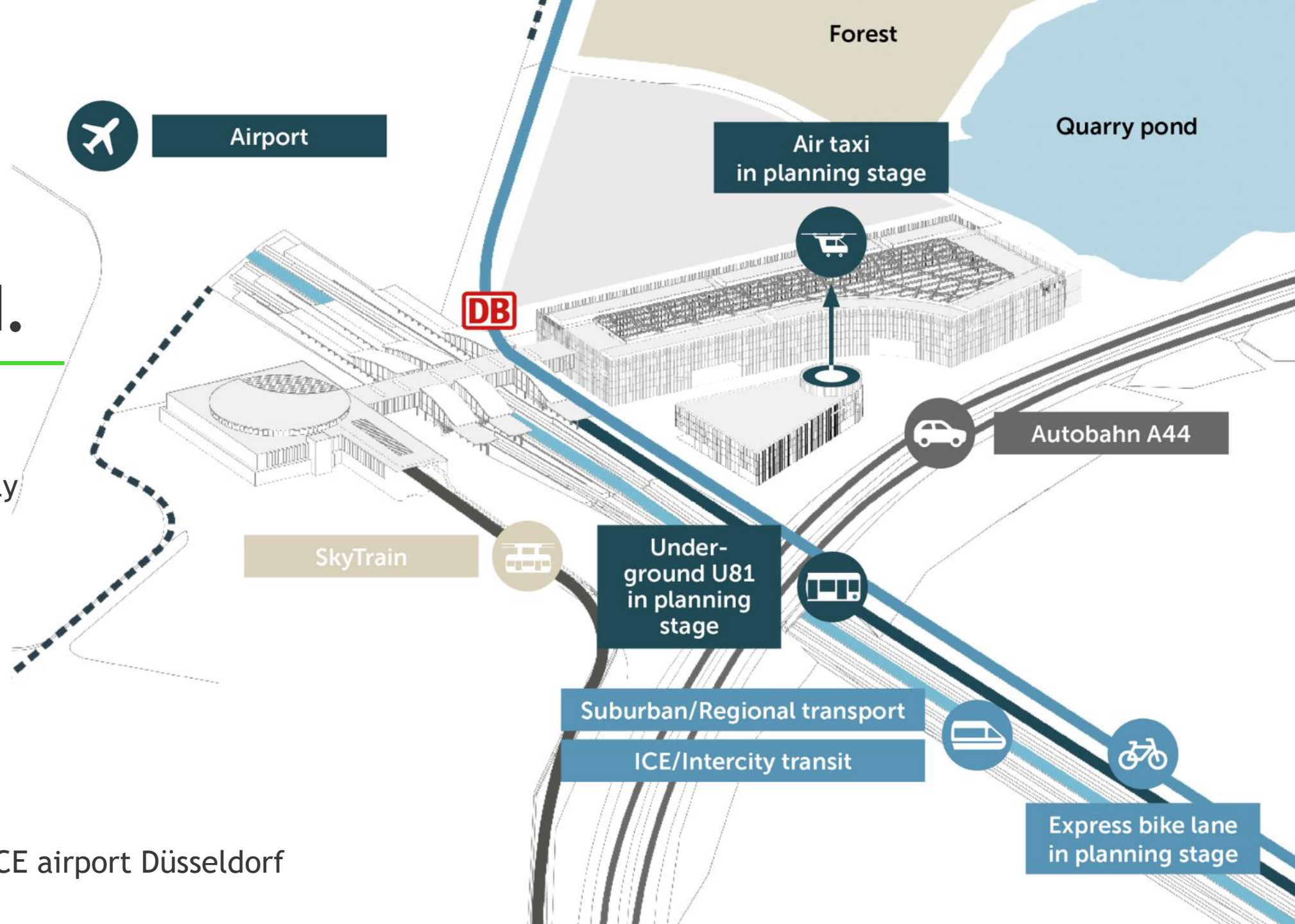
# Well connected.

**350**  
train connections daily

**25 min**  
by bike in the city

**5 min**  
to the main station

**5 min**  
to the international ICE airport Düsseldorf





# Growing green ideas. Hosting great events.

---

- CO<sub>2</sub> neutral events
- Innovation hotspot
- Think tank for sustainability
- 10 years of event experience
- Experts for live, digital and hybrid formats
- Re-use of the popular event dome from Berlin



# EVENT SPACES

---



**7 Conference rooms**

**Multifunctional and daylight-flooded event areas**

**Catering areas**

with indoor and outdoor spaces

**State of the art A/V technology**

**Modular room concepts**

separable event rooms







# Green, great, grand. Our popular event pavillion.

---

- “Jauch” EUREF Dome
- 600 Pax seated in conference style
- 250 Pax Banquet style
- Innovative event technology
- Historic set, famous from German tv shows and public viewing formats





Over-  
view



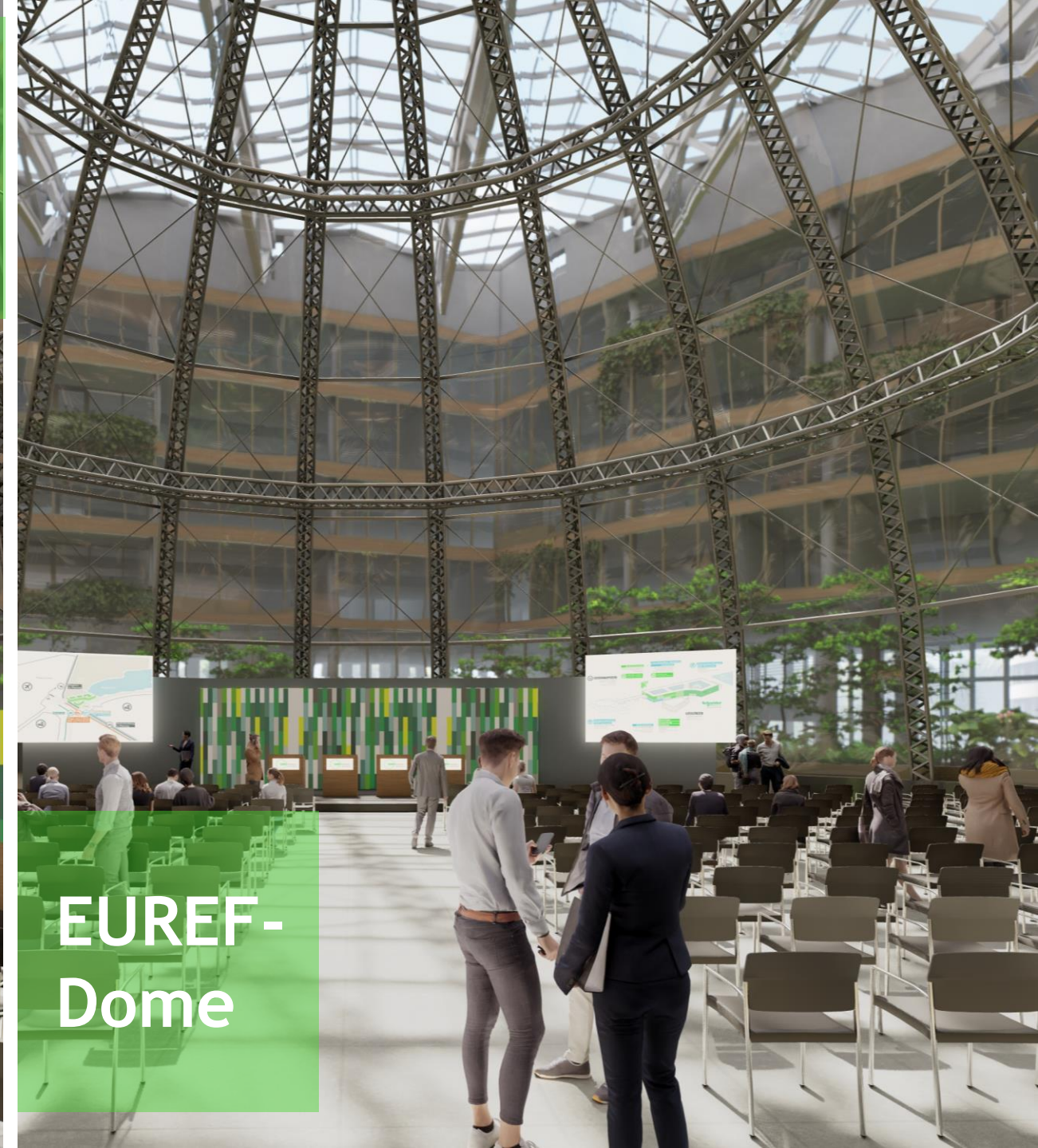
Exterior



EUREF-  
Dome



Interior



EUREF-  
Dome



*We will of course focus on healthy **regional products** and also put together a **rich vegan and vegetarian offering**.*

Cornelia Poletto, Celebrity chef, future gastronomic director of EUREF-Campus Düsseldorf

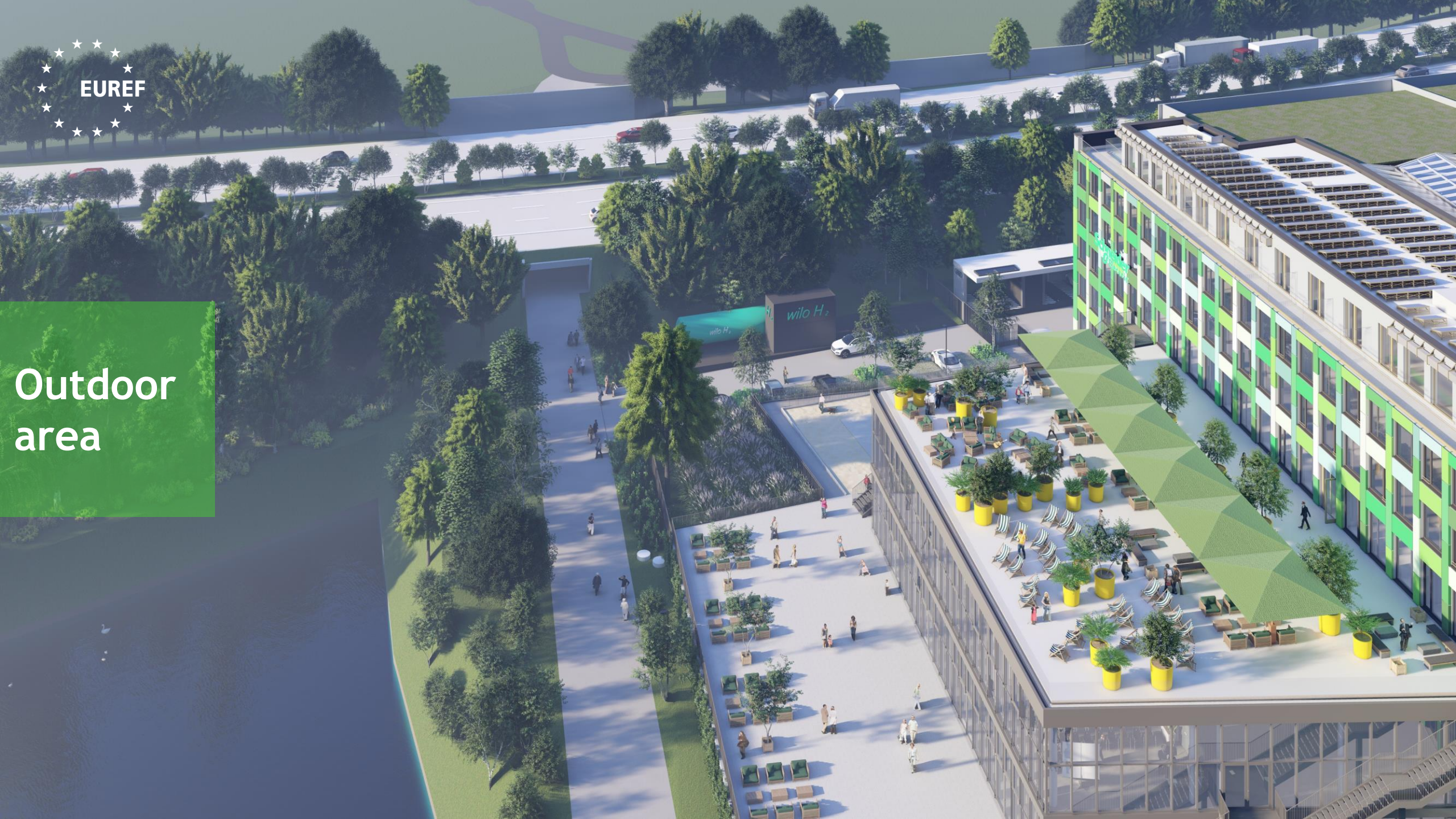
**Regional & light.  
With Mediterranean flair.**

---





Outdoor  
area







# Interior







# Event areas.

	Floor	Dimensions (m <sup>2</sup> )
EUREF-Kuppel	EG	874
EUREF-Kuppel Foyer	EG	1.000
Restaurant „Poletto“	EG	775
Restaurant indoor space	EG	356
Restaurant Terrace	EG	419
Cooking school „Poletto“	EG	101
Restaurant „Cantinetta“	EG	741
Foyer Workshop area	1. OG	967
Workshop 1+2	1. OG	234
Workshop 3+4	1. OG	187
Workshop 5+6	1. OG	249
Workshop 7	1. OG	151



# Stay in touch with us.

---



[www.euref.de](http://www.euref.de)



[@eurefcampus](https://www.instagram.com/eurefcampus)



[@eurefcampus](https://www.facebook.com/eurefcampus)



[/company/euref-ag](https://www.linkedin.com/company/euref-ag)



**Dennis Belloff**  
Event Management

EUREF-Event GmbH  
T: +49 30 264 757 87  
M: +49 15161567144  
[dennis.belloff@euref.de](mailto:dennis.belloff@euref.de)





See  
you

at EUREF-Campus Düsseldorf

